

Site Operations Research Project Progress

An additional metric used to evaluate the success of individual sites and the network as a whole is project completion. The completion rate of a project is monitored by tracking percent completion of project activities, as well as financial expenditures. These values are compared with the proposed annual progress and budgeted values from the respective site's annual work plan. Figure 1 provides a summary of project completion as compared to the planned percent completion for each site and the network as a whole. Overall, the network has a planned project completion percentage of 100% for FY 2014. The network achieved an average of 100% project completion in FY 2014 Q4.

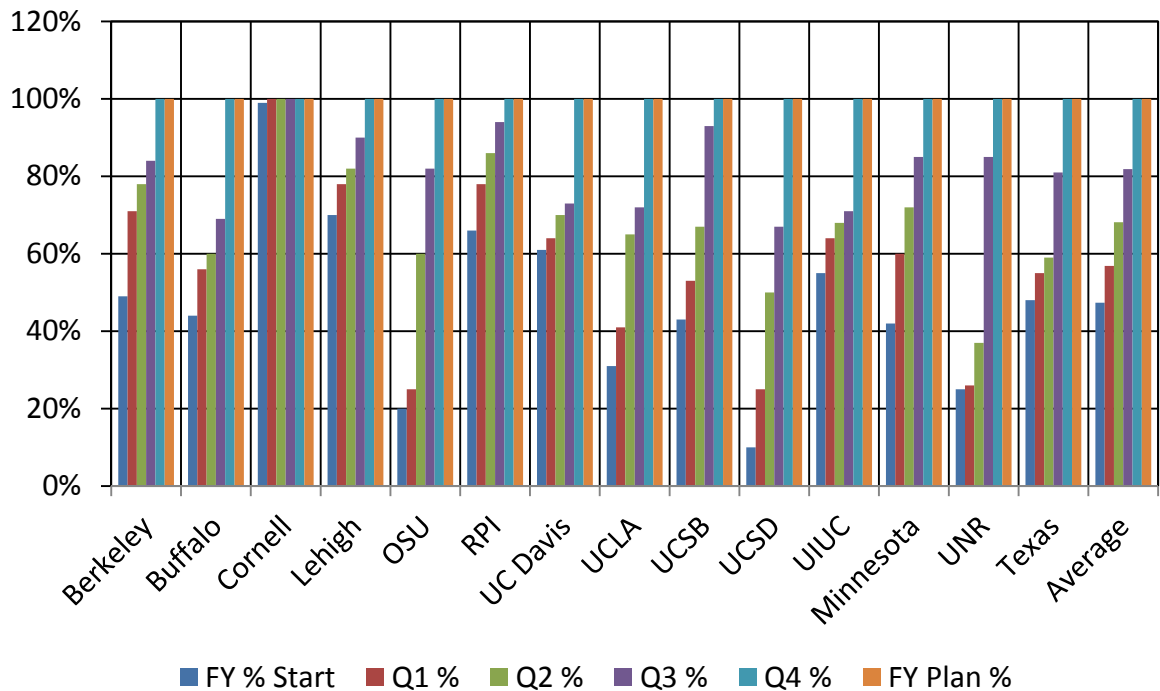


Figure 1 Project Completion